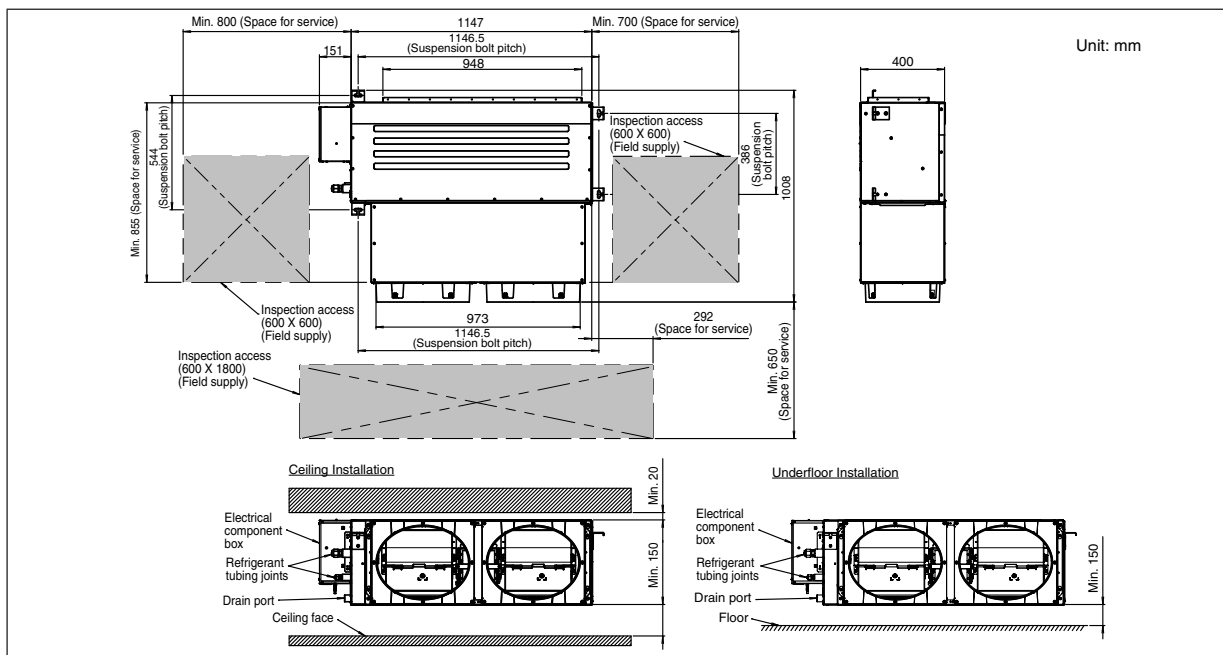




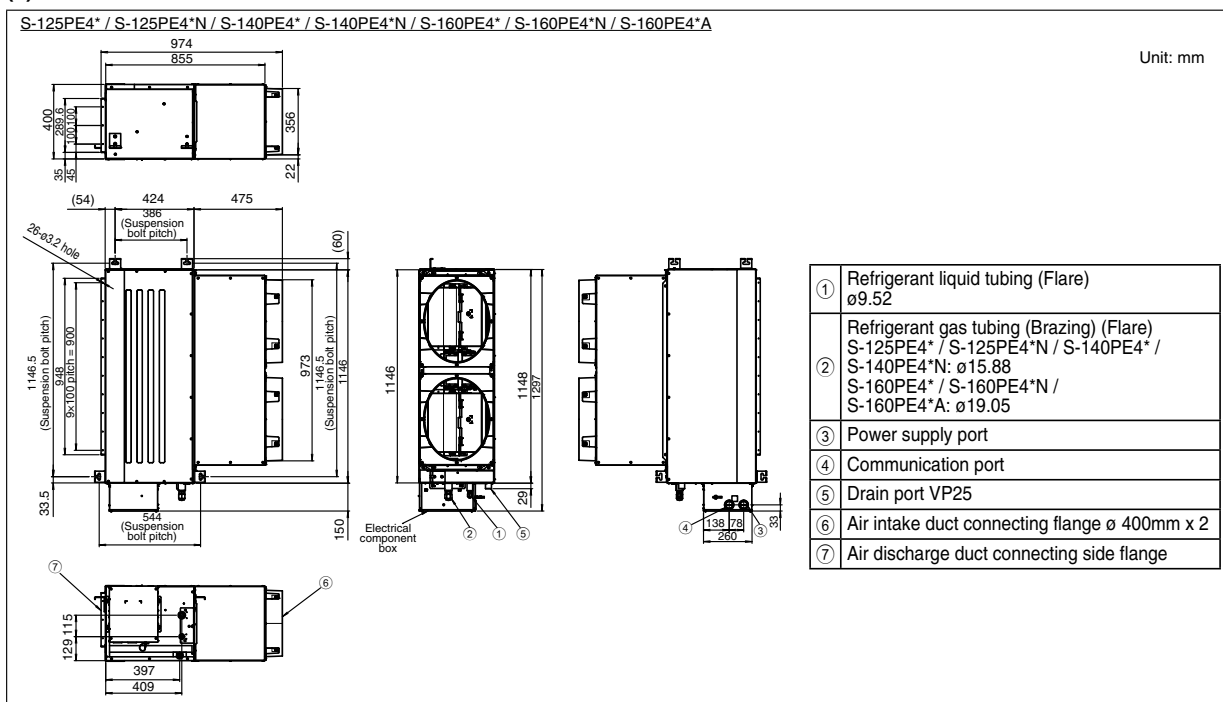
# HOW TO INSTALL THE INDOOR UNIT

## 2-1. Required Minimum Space for Installation and Service

### (1) Dimensions of suspension bolt pitch and unit

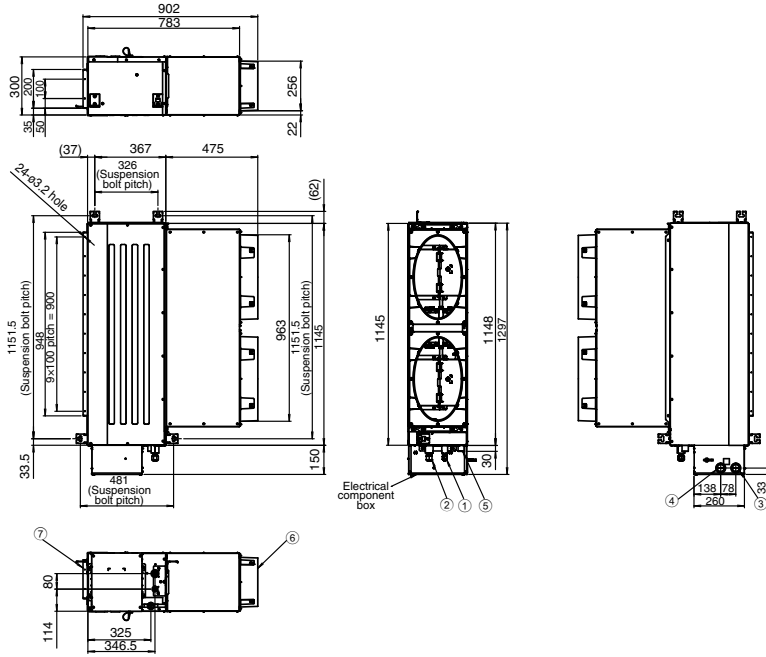


### (2) Dimensions of indoor unit



S-100PE4\* / S-100PE4\*N

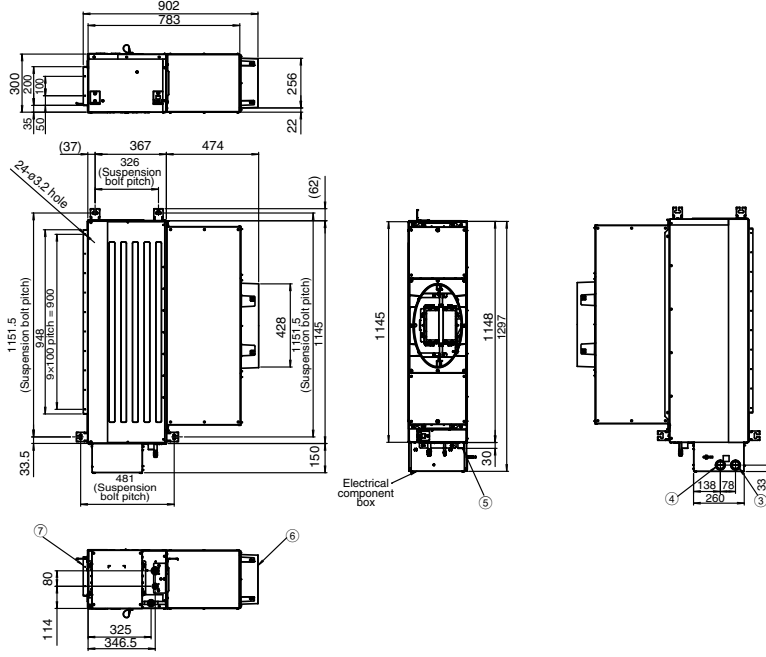
Unit: mm



①	Refrigerant liquid tubing (Flare) ø9.52
②	Refrigerant gas tubing (Flare) ø15.88
③	Power supply port
④	Communication port
⑤	Drain port VP25
⑥	Air intake duct connecting flange ø 350mm x 2
⑦	Air discharge duct connecting side flange

S-60PE4\* / S-71PE4\*

Unit: mm



①	Refrigerant liquid tubing (Flare) S-60PE4*: ø6.35 S-71PE4*: ø9.52
②	Refrigerant gas tubing (Brazing) (Flare) S-60PE4*: ø12.7 S-71PE4*: ø15.88
③	Power supply port
④	Communication port
⑤	Drain port VP25
⑥	Air intake duct connecting flange ø 350mm x 1
⑦	Air discharge duct connecting side flange